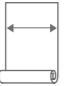









BASALTO

 <p>Width of wallcovering 98 cm / 38.6" (±3%) sold by the linear metre/yard</p>	 <p>Match Straight match</p>	 <p>Fire resistant</p>	 <p>Breathable</p>	 <p>Adhesive Apply a adhesive for non woven wallcovering directly to the wall</p>	 <p>Light Resistance Good lightfastness</p>	 <p>How to re- move Strippable</p>	 <p>Washability Spongeable</p>
---	--	--	--	--	---	--	--

Technique/technology:

Weight:

Type of support:

Match:

How to paste:

How to remove:

Double print on non woven

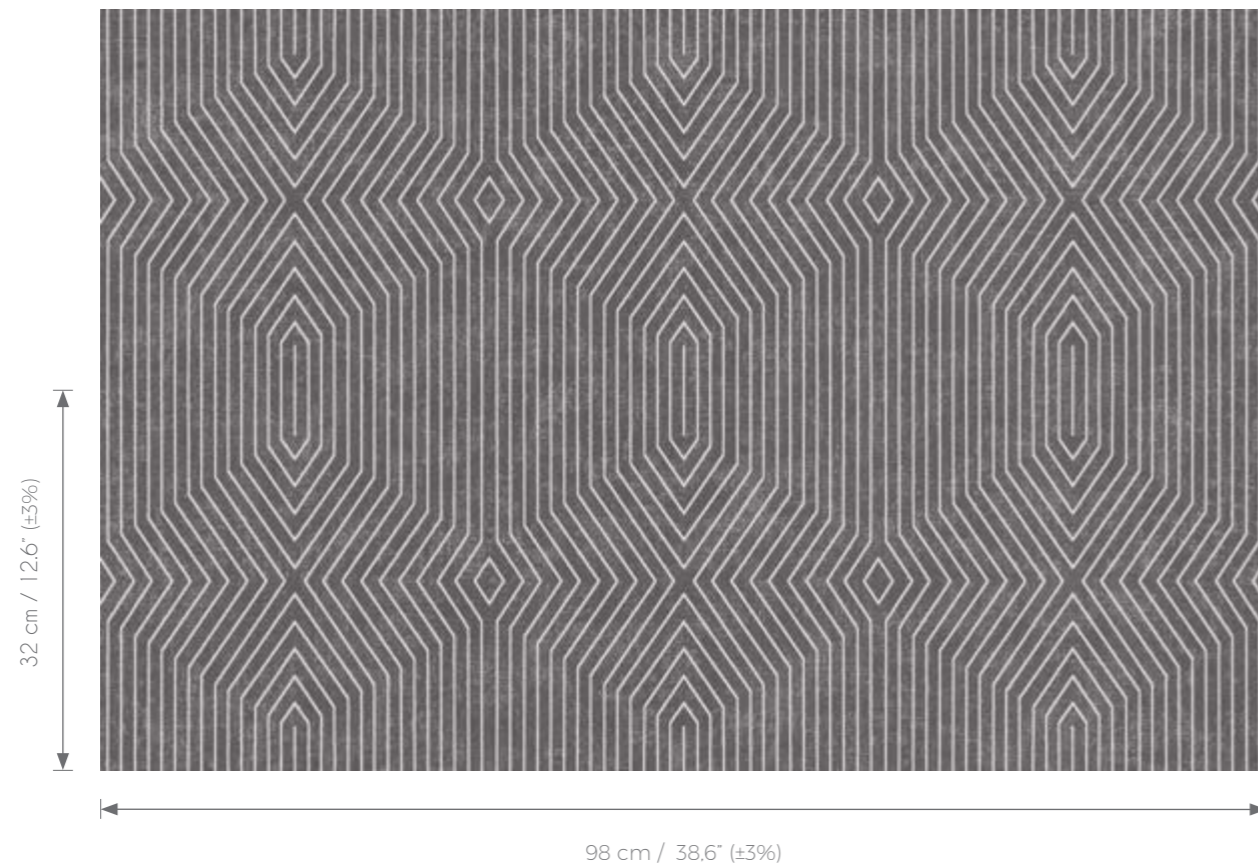
≈585 g/m² (± 3%)

No woven 130 gr

Straight match

Paste the wall

Strippable



COLOR RANGE



ON200 | ONYX



ON201 | AMBER



ON203 | QUARTZ



ON204 | PERLMUTT



ON205 | MAGNESITE



ON206 | MOONSTONE



ON207 | AQUAMARIN

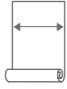


ON208 | SODALITE

N.B.

— the portrayed colours may differ from reality

SANDWAVE

 <p>Width of wallcovering 98 cm / 38.6" (±3%) sold by the linear metre/yard</p>	 <p>Match Straight match</p>	 <p>Fire resistant</p>	 <p>Breathable</p>	 <p>Adhesive Apply a adhesive for non woven wallcovering directly to the wall</p>	 <p>Light Resistance Good lightfastness</p>	 <p>How to remove Strippable</p>	 <p>Washability Spongeable</p>
---	--	--	--	---	---	--	--

Technique/technology:

Weight:

Type of support:

Match:

How to paste:

How to remove:

Double print on non woven

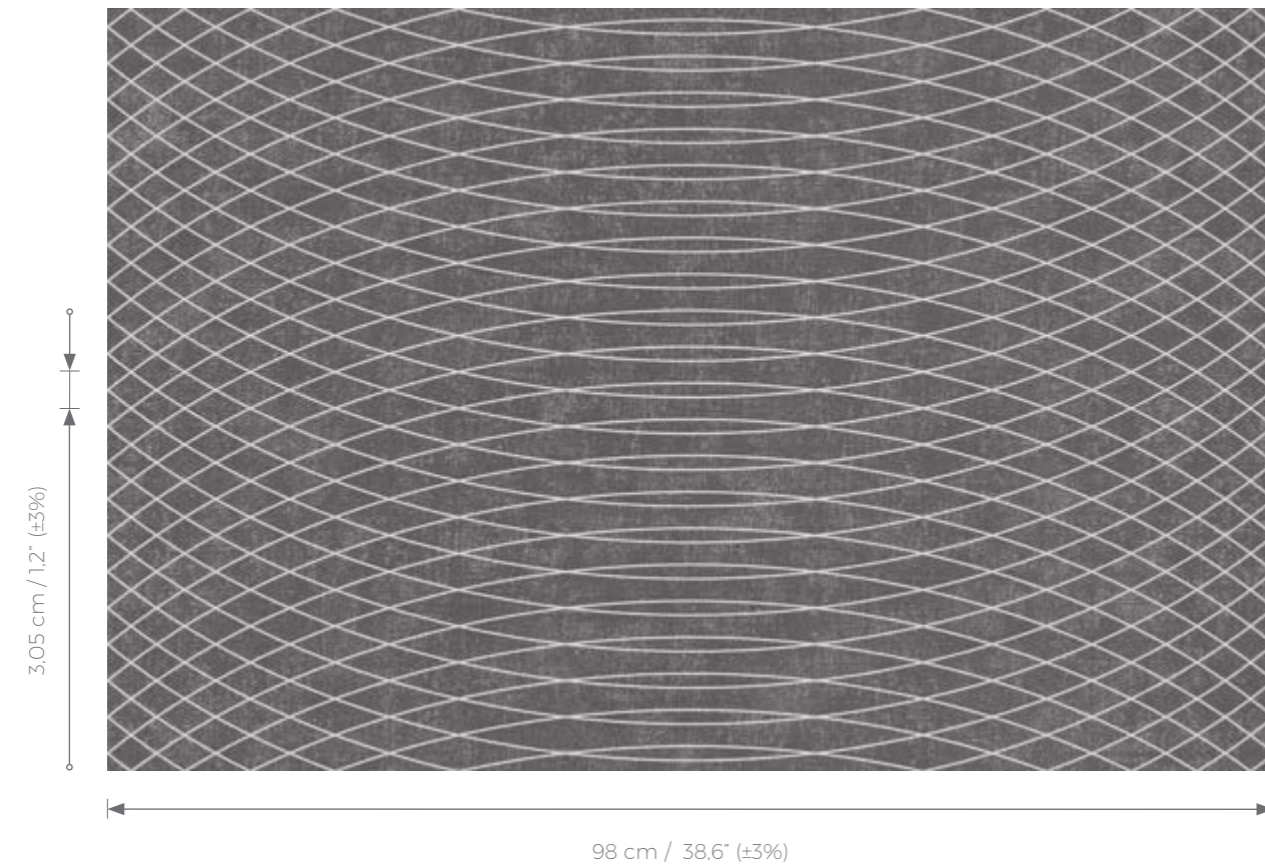
≈559 g/m² (± 3%)

No woven 130 gr

Straight match

Paste the wall

Strippable



COLOR RANGE



ON100 | ONYX



ON101 | AMBER



ON103 | QUARTZ



ON104 | PERLMUTT



ON105 | MAGNESITE



ON106 | MOONSTONE



ON107 | AQUAMARIN

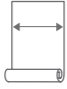









ON108 | SODALITE

N.B.

— the portrayed colours may differ from reality

KIMBERITE

 <p>Width of wallcovering 98 cm / 38.6" (±3%) sold by the linear metre/yard</p>	 <p>Match Straight match</p>	 <p>Fire resistant</p>	 <p>Breathable</p>	 <p>Adhesive Apply a adhesive for non woven wallcovering directly to the wall</p>	 <p>Light Resistance Good lightfastness</p>	 <p>How to remove Strippable</p>	 <p>Washability Spongeable</p>
---	--	--	--	---	---	--	--

Technique/technology:

Weight:

Type of support:

Match:

How to paste:

How to remove:

Double print on non woven

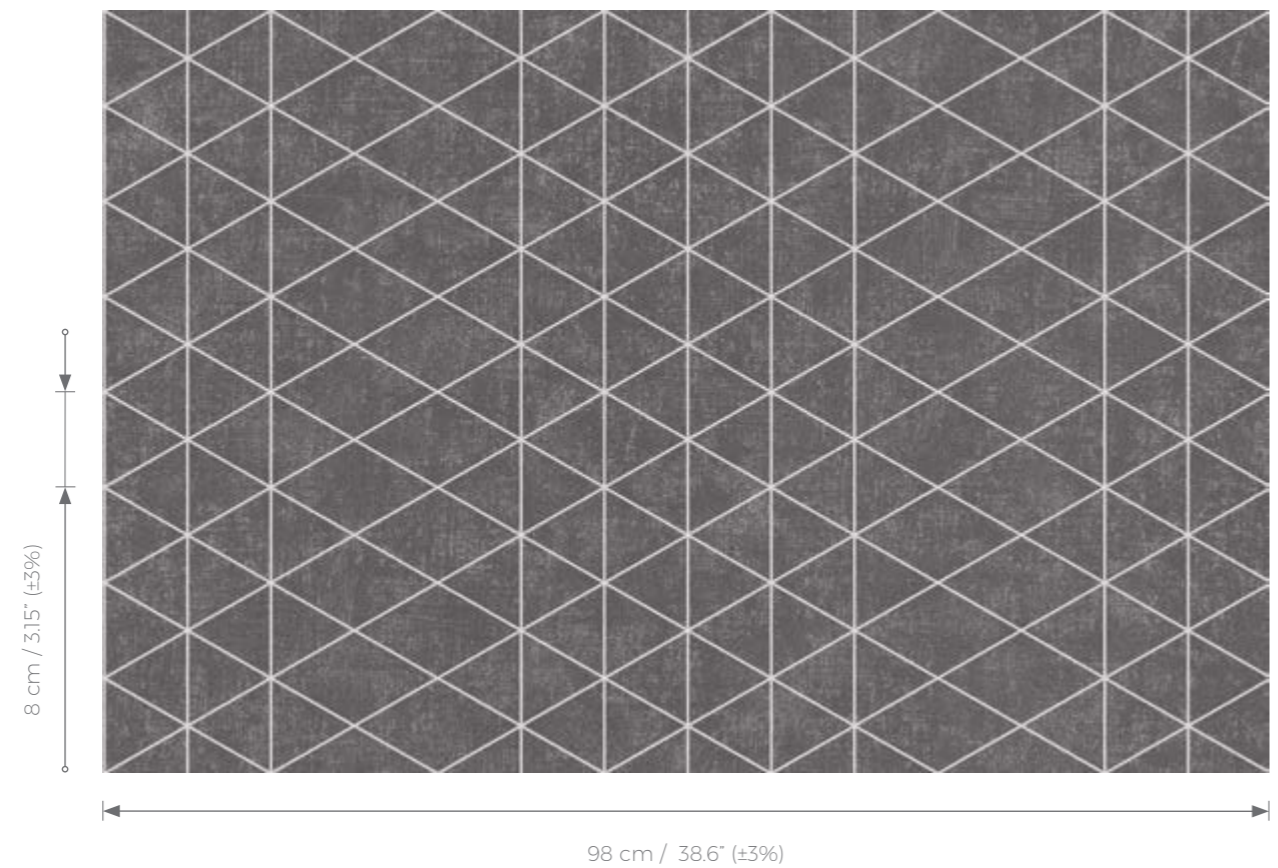
≈562 g/m² (± 3%)

No woven 130 gr

Straight match

Paste the wall

Strippable



COLOR RANGE



ON300 | ONYX



ON301 | AMBER



ON303 | QUARTZ



ON304 | PERLMUTT



ON305 | MAGNESITE



ON306 | MOONSTONE



ON307 | AQUAMARIN

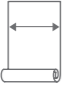









ON308 | SODALITE

N.B.

— the portrayed colours may differ from reality

FLYSCH

 <p>Width of wallcovering 98 cm / 38.6" (±3%) sold by the linear metre/yard</p>	 <p>Match Straight match</p>	 <p>Fire resistant</p>	 <p>Breathable</p>	 <p>Adhesive Apply a adhesive for non woven wallcovering directly to the wall</p>	 <p>Light Resistance Good lightfastness</p>	 <p>How to remove Strippable</p>	 <p>Washability Spongeable</p>
---	--	--	--	---	---	--	--

Technique/technology:

Weight:

Type of support:

Match:

How to paste:

How to remove:

Double print on non woven

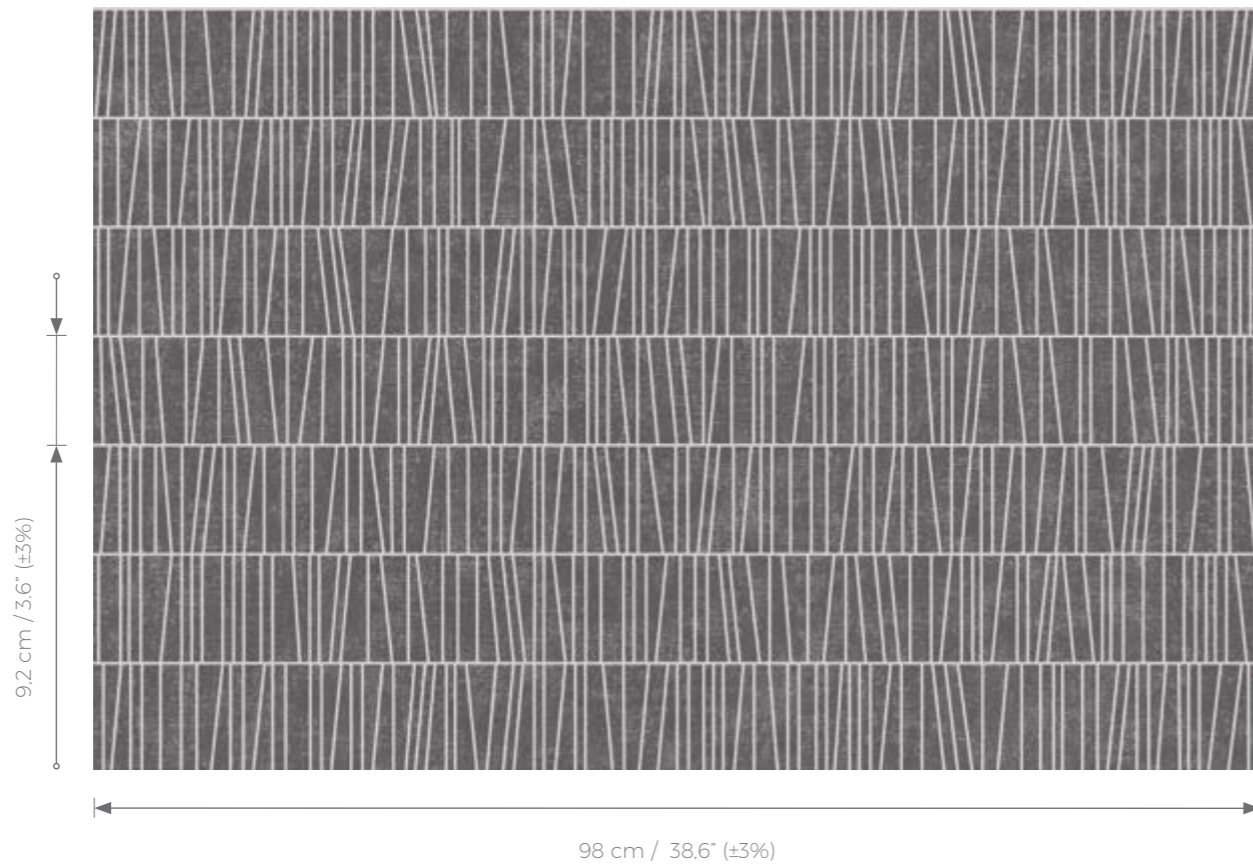
≈603 g/m² (± 3%)

No woven 130 gr

Straight match

Paste the wall

Strippable



COLOR RANGE



ON400 | ONYX



ON401 | AMBER



ON403 | QUARTZ



ON404 | PERLMUTT



ON405 | MAGNESITE



ON406 | MOONSTONE



ON407 | AQUAMARIN

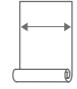








ON408 | SODALITE

N.B.

– the portrayed colours may differ from reality

GREISEN

 <p>Width of wallcovering 98 cm / 38.6" (±3%) sold by the linear metre/yard</p>	 <p>Match Free match</p>	 <p>Fire resistant</p>	 <p>Breathable</p>	 <p>Adhesive Apply an adhesive for non woven wallcovering directly to the wall</p>	 <p>Light Resistance Good lightfastness</p>	 <p>How to remove Strippable</p>	 <p>Washability Spongeable</p>
---	--	--	--	---	---	--	--

Technique/technology:

Weight:

Type of support:

Match:

How to paste:

How to remove:

Double print on non woven

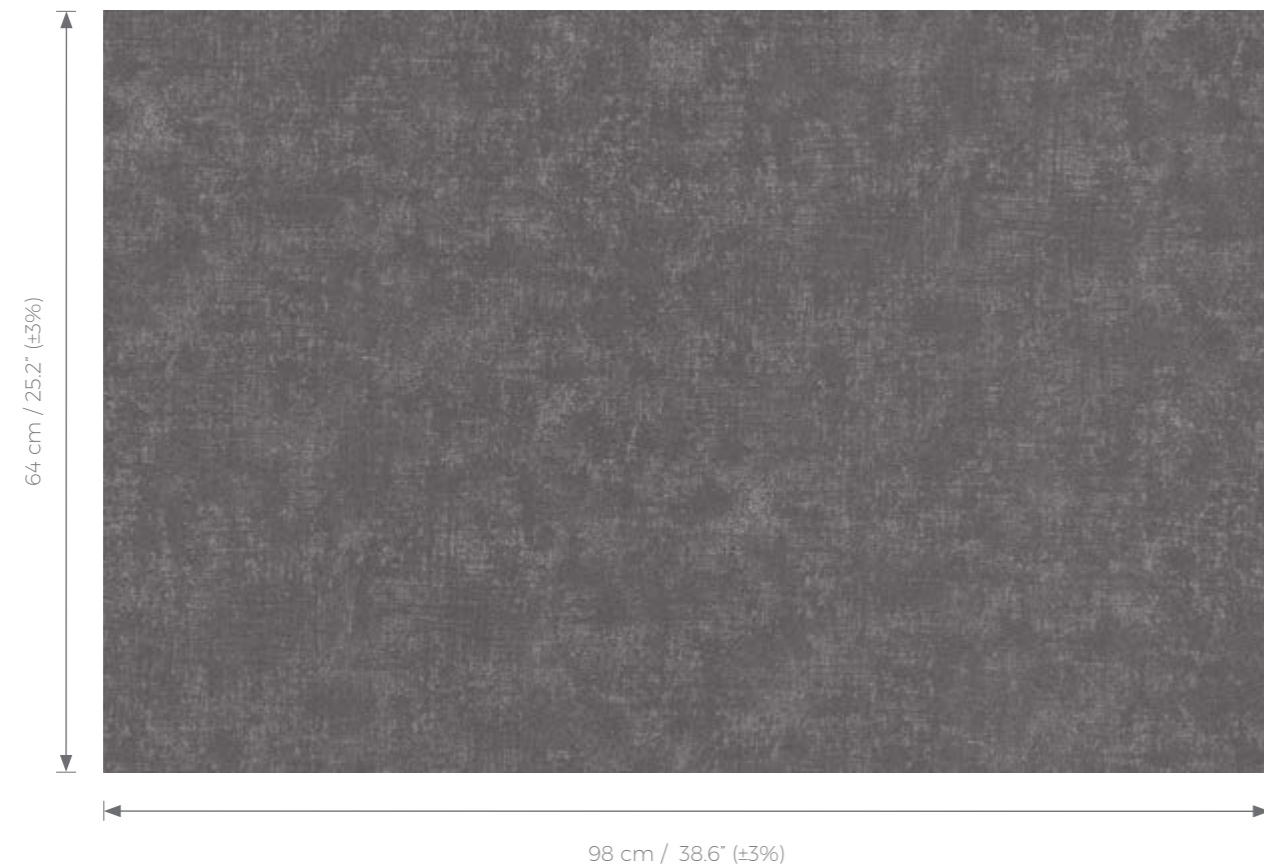
~497 g/m² (± 3%)

No woven 130 gr

Free match

Paste the wall

Strippable



COLOR RANGE



ON500 | ONYX



ON501 | AMBER



ON503 | QUARTZ



ON504 | PERLMUTT



ON505 | MAGNESITE



ON506 | MOONSTONE



ON507 | AQUAMARIN



ON508 | SODALITE

N.B.

— the portrayed colours may differ from reality

NAME	REFERENCE	COLOR	PAGE	MATCH	REPEAT
SANDWAVE	ON100	ONYX	14	- -	3.05 cm / 1.2"
	ON101	AMBER	13	- -	
	ON103	QUARTZ	6	- -	
	ON104	PERLMUTT	27	- -	
	ON105	MAGNESITE	7	- -	
	ON106	MOONSTONE	3	- -	
	ON107	AQUAMARIN	2	- -	
	ON108	SODALITE	21	- -	
BASALTO	ON200	ONYX	5	- -	32 cm / 12.6"
	ON201	AMBER	4	- -	
	ON203	QUARTZ	24	- -	
	ON204	PERLMUTT	25	- -	
	ON205	MAGNESITE	9	- -	
	ON206	MOONSTONE	15	- -	
	ON207	AQUAMARIN	29	- -	
	ON208	SODALITE	1	- -	
KIMBERITE	ON300	ONYX	31	- -	8 cm / 3.15"
	ON301	AMBER	11	- -	
	ON303	QUARTZ	4	- -	
	ON304	PERLMUTT	10	- -	
	ON305	MAGNESITE	20	- -	
	ON306	MOONSTONE	8	- -	
	ON307	AQUAMARIN	15	- -	
	ON308	SODALITE	16	- -	
FLYSCH	ON400	ONYX	10	- -	9,2 cm / 3.6"
	ON401	AMBER	30	- -	
	ON403	QUARTZ	12	- -	
	ON404	PERLMUTT	17	- -	
	ON405	MAGNESITE	19	- -	
	ON406	MOONSTONE	18	- -	
	ON407	AQUAMARIN	22	- -	
	ON408	SODALITE	21	- -	
GREISEN	ON500	ONYX	31	- 0	64 cm / 25.2"
	ON501	AMBER	30	- 0	
	ON503	QUARTZ	25	- 0	
	ON504	PERLMUTT	23	- 0	
	ON505	MAGNESITE	26	- 0	
	ON506	MOONSTONE	28	- 0	
	ON507	AQUAMARIN	16	- 0	
	ON508	SODALITE	3	- 0	

HANGING INSTRUCTIONS

RECEPTION OF THE MATERIAL

Be sure all material has the same run lot number before installation. Final inspection should be made as to correct pattern, color and any defects in craftsmanship. No claims will be accepted beyond the installation of 3 strips. Absolutely no labour claims will be considered. Application of material is interpreted as acceptance of material and conditions of installation. This is a natural product, differences of color and aspect between batches are unavoidable. We cannot guarantee a perfect color match between the sample in the pattern book and the delivered goods.

WALLCOVERING - INSTALLATION

1. WALL PREPARATION

Ensure surfaces are clean, smooth, dry, firm and uniformly colored. Do not hang over glossy or nonporous places, stains. Painted walls should be washed down with Tri Sodium Phosphate to remove grease or soil. Glossy paint should be dulled with sandpaper. Never hang over new plaster or unprimed wall areas. For wallboard, ply or drywall, fill all cracks and prepare the surface with an acrylic basecoat.

2. PREPARATION OF STRIPS

- If your order contains several numbered rolls of one single item/reference, please first install the roll with the highest number, and then continue to install the other rolls in sequence, in descending order.
- Measure and cut 3 strip lengths. Add 2" to 4" (5 to 10 cm) to top and bottom of each strip.
- For printed patterns, plan your match from the roll before cutting.
- Mark each strip coming from the roll on the back and hang in the same sequence.
- Reverse alternate lengths when instructed to do so by label on the roll.

3. INSTALLATION

Apply a ready mixed PVA or EVA clear adhesive to the wall. Follow the instructions of the adhesive manufacturer. Do not use too much adhesive (about 7 ozs/sqyd - 200 gr/m²). Respect the open time recommended by the adhesive manufacturer to penetrate into the wall or to evaporate.

ATTENTION !

- Make sure the adhesive is spread out evenly over the whole surface to ensure good adhesion to the wall. This will avoid open seams.
- Do not use too much adhesive to avoid seam tearing stains on the wallcovering.
- Never allow the adhesive to get on front of the material.