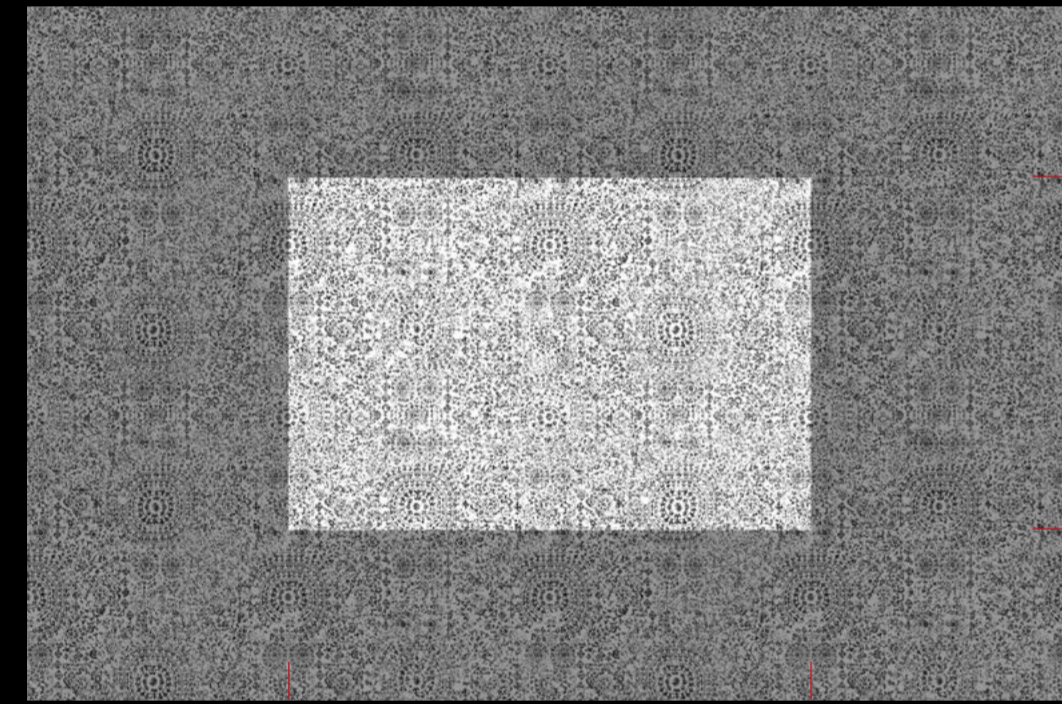


95 cm / 37.4" (±3%)

64 cm / 25.2"

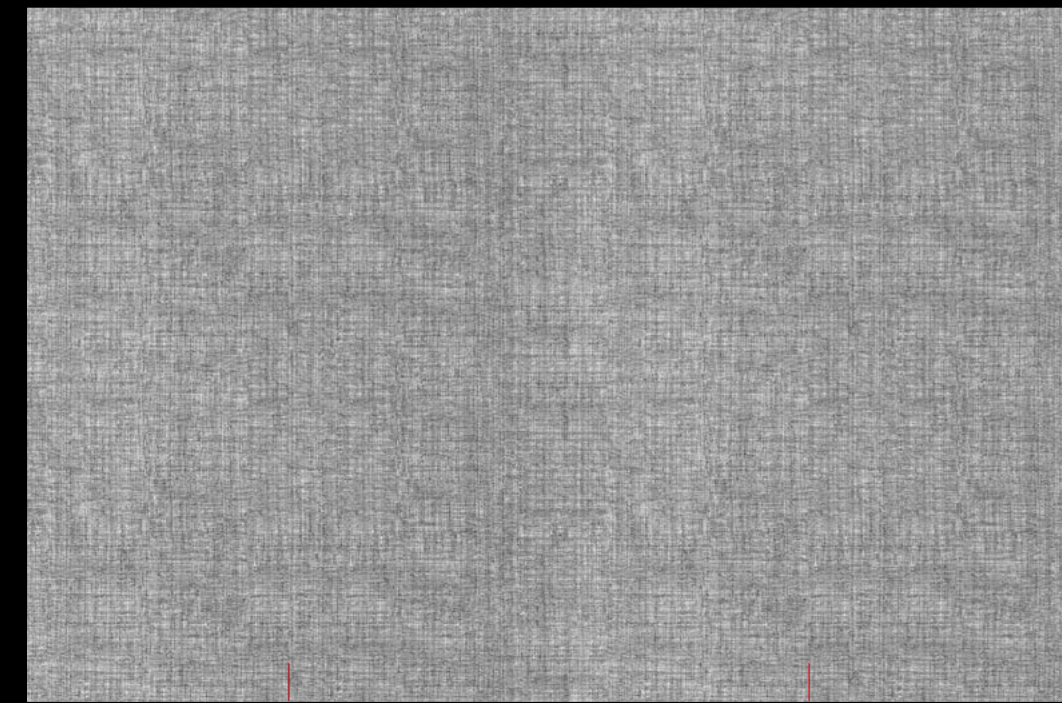
MAIOLICA



95 cm / 37.4" (±3%)

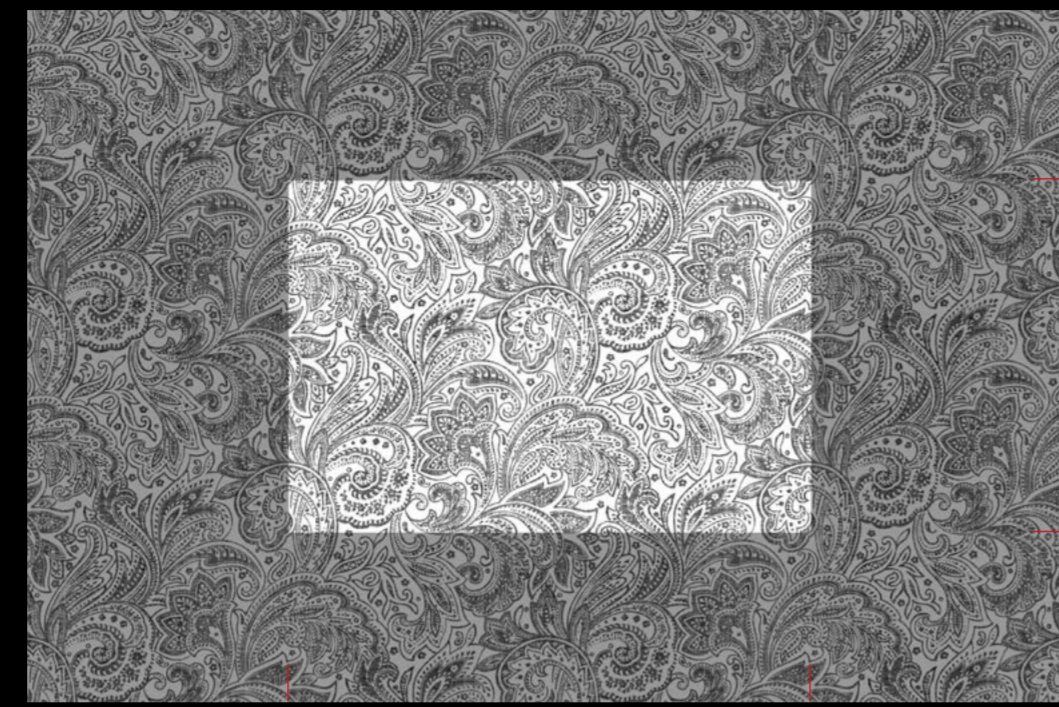
64 cm / 25.2"

LINO



95 cm / 37.4" (±3%)

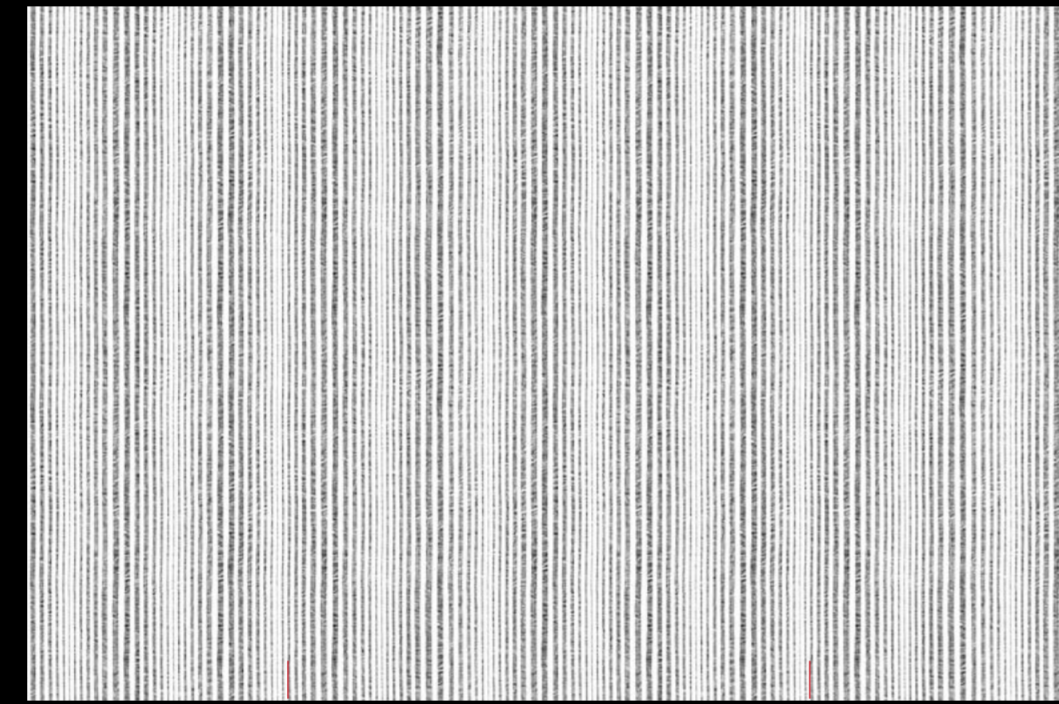
0 cm / 0"



95 cm / 37.4" (±3%)

64 cm / 25.2"

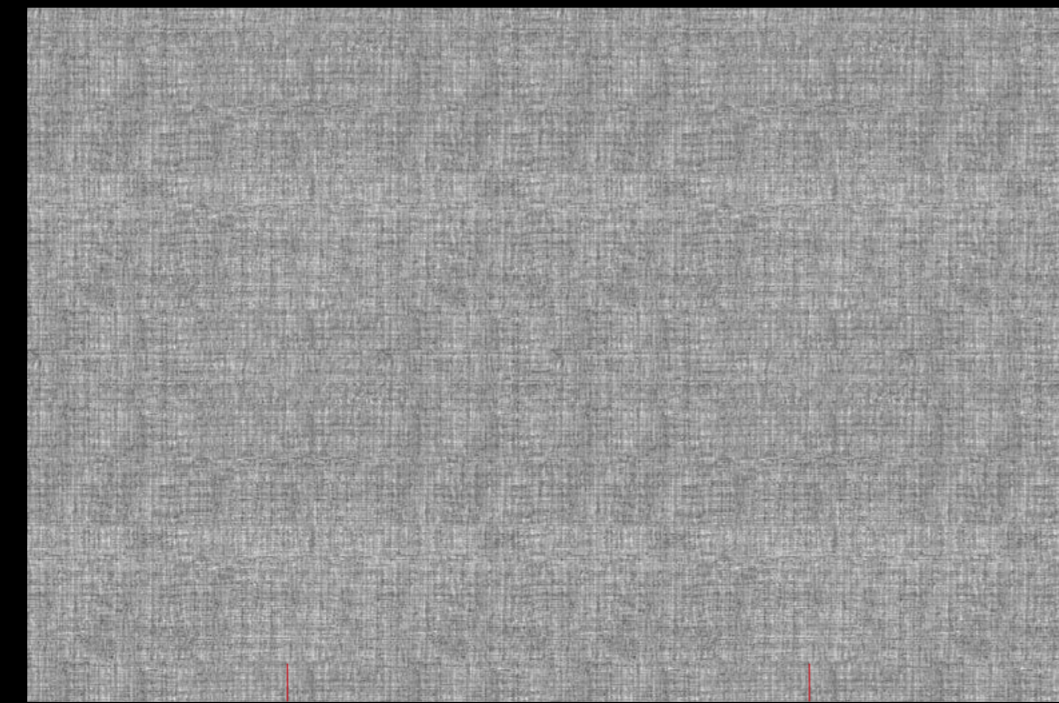
STRIPE



95 cm / 37.4" (±3%)

0 cm / 0"

TEXTILE

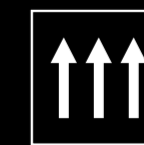
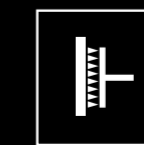
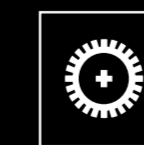
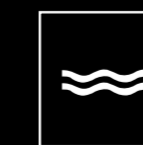


95 cm / 37.4" (±3%)

0 cm / 0"

Lino

NAME	REFERENCE	PAGE	MATCH	REPEAT	WIDTH (±3%)	WEIGHT
PATCHWORK	LN11	18	↔	64 cm (25.2")	95 cm (37.4")	≈ 172 g/m ²
	LN12	33	↔	64 cm (25.2")	95 cm (37.4")	≈ 172 g/m ²
	LN13	13	↔	64 cm (25.2")	95 cm (37.4")	≈ 172 g/m ²
	LN14	11	↔	64 cm (25.2")	95 cm (37.4")	≈ 172 g/m ²
	LN15	14	↔	64 cm (25.2")	95 cm (37.4")	≈ 172 g/m ²
KASHMIR	LN21	2	↔	64 cm (25.2")	95 cm (37.4")	≈ 172 g/m ²
	LN22	9	↔	64 cm (25.2")	95 cm (37.4")	≈ 172 g/m ²
	LN23	16	↔	64 cm (25.2")	95 cm (37.4")	≈ 172 g/m ²
	LN24	31	↔	64 cm (25.2")	95 cm (37.4")	≈ 172 g/m ²
	LN25	36	↔	64 cm (25.2")	95 cm (37.4")	≈ 172 g/m ²
	LN26	15	↔	64 cm (25.2")	95 cm (37.4")	≈ 172 g/m ²
MAIOLICA	LN32	23	↔	64 cm (25.2")	95 cm (37.4")	≈ 172 g/m ²
	LN34	25	↔	64 cm (25.2")	95 cm (37.4")	≈ 172 g/m ²
	LN36	29	↔	64 cm (25.2")	95 cm (37.4")	≈ 172 g/m ²
STRIPE	LN41	20	→ 0	0 cm (0")	95 cm (37.4")	≈ 172 g/m ²
	LN42	35	→ 0	0 cm (0")	95 cm (37.4")	≈ 172 g/m ²
	LN43	5	→ 0	0 cm (0")	95 cm (37.4")	≈ 172 g/m ²
	LN44	4	→ 0	0 cm (0")	95 cm (37.4")	≈ 172 g/m ²
	LN45	10	→ 0	0 cm (0")	95 cm (37.4")	≈ 172 g/m ²
	LN46	21	→ 0	0 cm (0")	95 cm (37.4")	≈ 172 g/m ²
LINO	LN51	22-27	→ 0	0 cm (0")	95 cm (37.4")	≈ 172 g/m ²
	LN52	22-24	→ 0	0 cm (0")	95 cm (37.4")	≈ 172 g/m ²
	LN53	6-12	→ 0	0 cm (0")	95 cm (37.4")	≈ 172 g/m ²
	LN54	26-30	→ 0	0 cm (0")	95 cm (37.4")	≈ 172 g/m ²
	LN55	12-34	→ 0	0 cm (0")	95 cm (37.4")	≈ 172 g/m ²
	LN56	28-30	→ 0	0 cm (0")	95 cm (37.4")	≈ 172 g/m ²
TEXTILE	LN61	3-22	→ 0	0 cm (0")	95 cm (37.4")	≈ 172 g/m ²
	LN62	7-22	→ 0	0 cm (0")	95 cm (37.4")	≈ 172 g/m ²
	LN63	12-17	→ 0	0 cm (0")	95 cm (37.4")	≈ 172 g/m ²
	LN64	30-32	→ 0	0 cm (0")	95 cm (37.4")	≈ 172 g/m ²
	LN65	8-12	→ 0	0 cm (0")	95 cm (37.4")	≈ 172 g/m ²
	LN66	19-30	→ 0	0 cm (0")	95 cm (37.4")	≈ 172 g/m ²



Double print design over non woven back