

TEXAM

WALL MASTERS

TEXAM

T+39 035 460449 F+39 035 461452 |
info@texamhome.com | Via Milano 10,
24030 Presezzo (BG) Italy
| V A T I T O 0 9 1 6 3 7 0 1 6 6

www.texamhome.com

Collection

LUX

QUANTUM

Technique / technology:

Laser Marking

Weight:

≈ 186 g/m² (± 3%)

Width:

128 cm / 50.39" (± 3%)

Match:

Straight Match

Adhesive:

Adhesive for wallpaper

Type of support:

Polyester on TNT

How to paste:

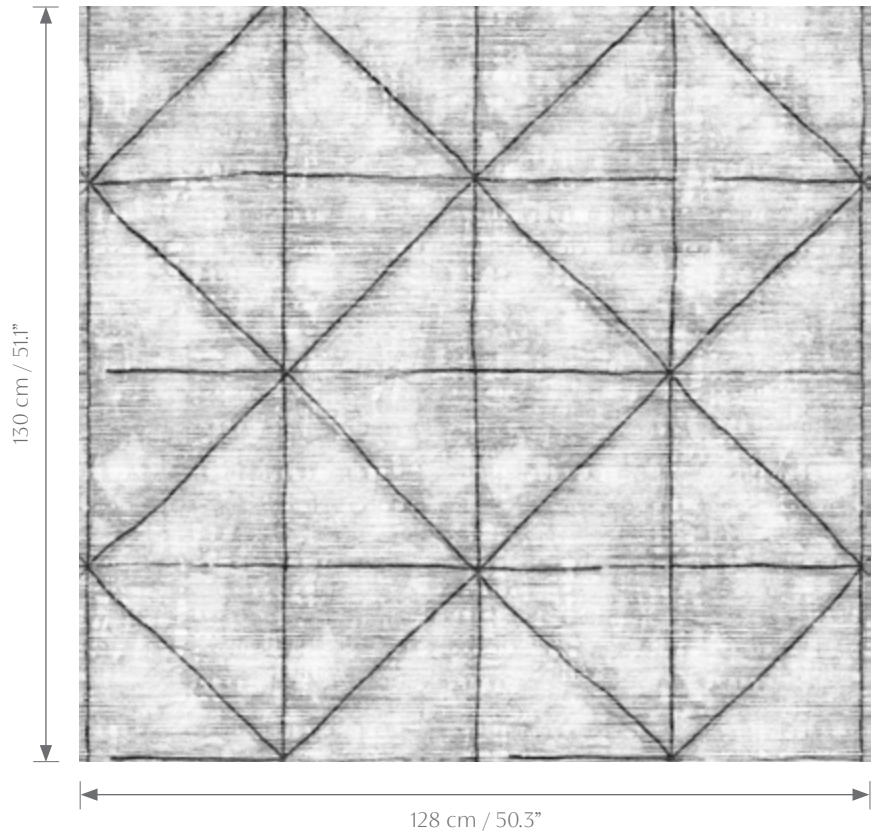
Paste the wall

How to remove:

Strippable

Sales unit:

Linear meters



Light Resistance
Good lightfastness



How to remove
Strippable



Breathable



Fire resistant
B-s1, d0



Washability
Washable