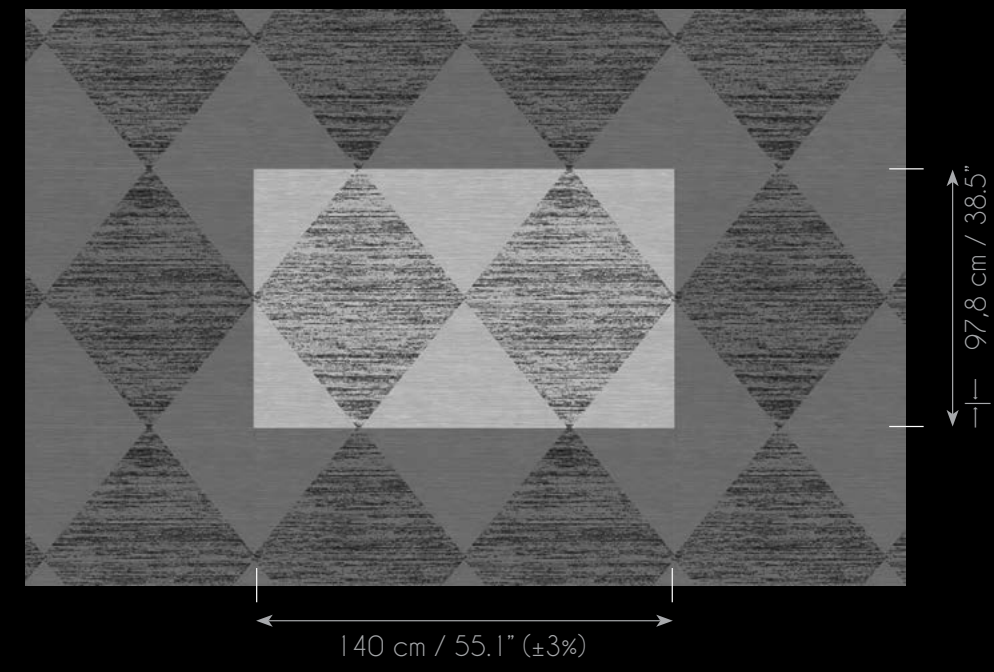
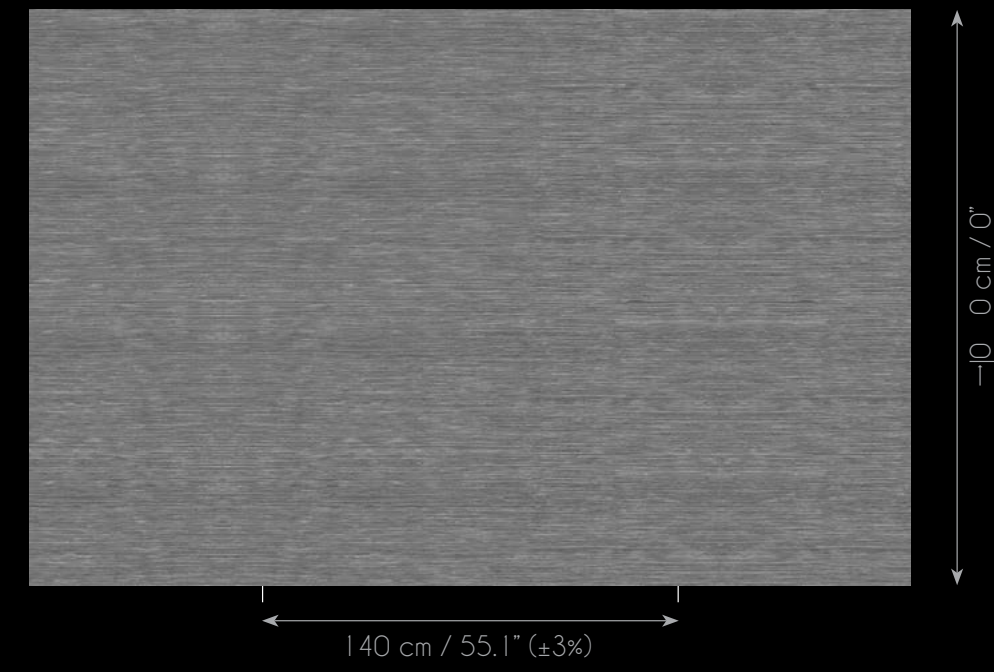


### HARLEQUIN



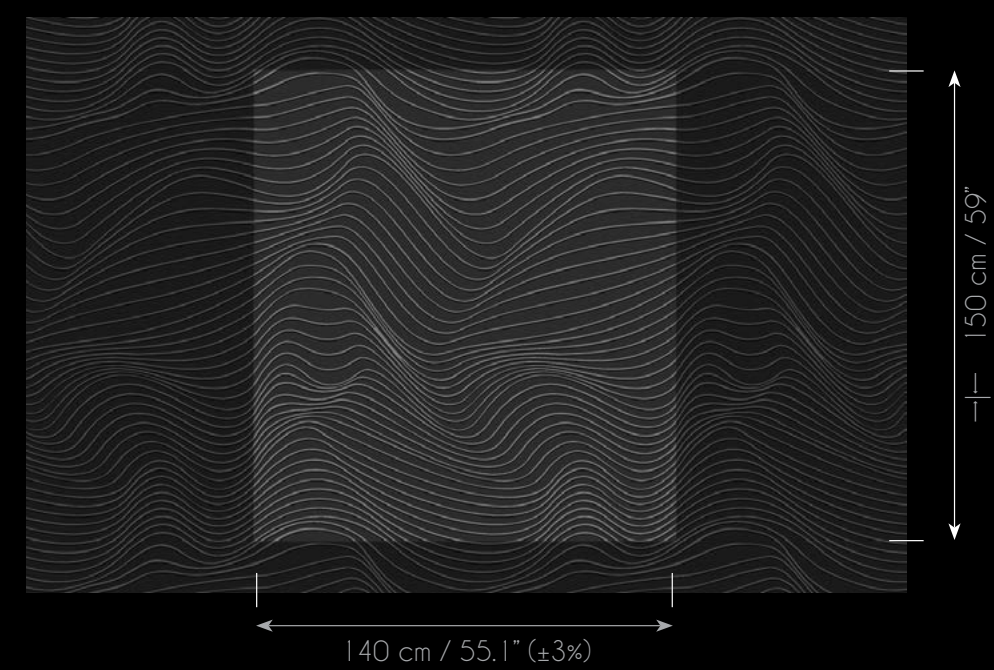
Polyamide (PA).....71%  
Polyester (PES).....29%

### MANILA



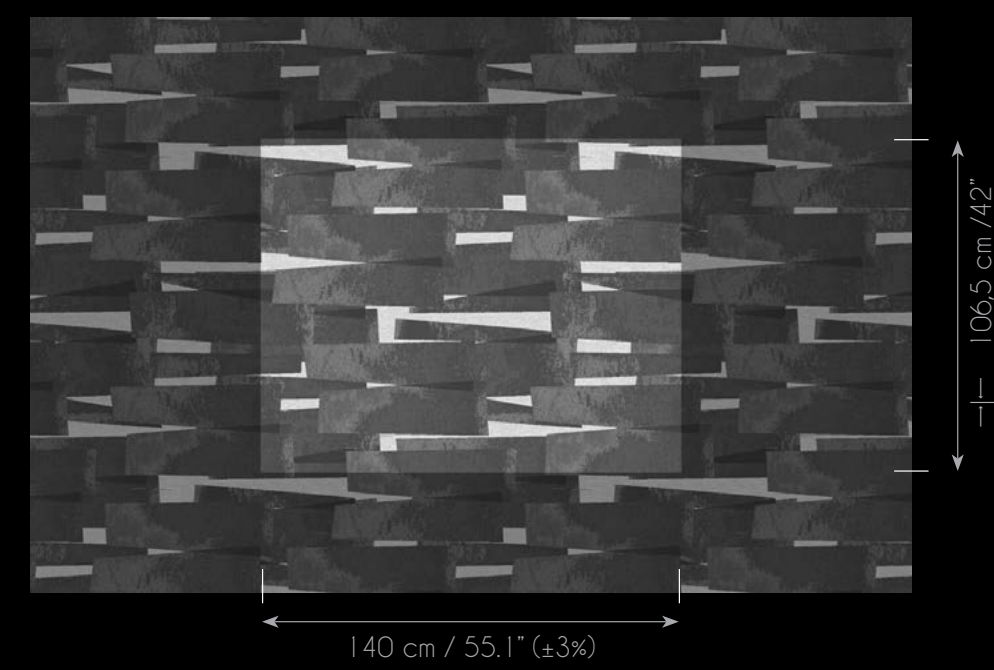
Cotton (CO).....1%  
Polyamide (PA).....58%  
Polyester (PES).....23%  
Viscose (VI).....18%

### DESERT BREEZE



Cotton (CO).....1%  
Polyamide (PA).....56%  
Polyester (PES).....9%  
Viscose (VI).....34%

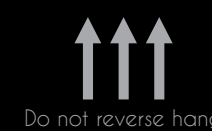
### LAPPING



Cotton (CO).....1%  
Polyamide (PA).....56%  
Polyester (PES).....9%  
Viscose (VI).....34%

# R A P H I A

NAME	REFERENCE	COLOR	PAGE	MATCH	REPEAT
HARLEQUIN	RA100	HYAMS	15	---	97,8 cm (38,5")
	RA104	PALIKI	13		
	RA105	PFEIFFER	10		
	RA106	KAIHALULU	9		
	RA108	MYANMAR	5		
MANILA	RA109	KALUTARA	16	---	0 cm (0")
	RA200	HYAMS	1-8		
	RA202	PAPAKOLEA	1-6		
	RA203	CAPRAIA	2-6		
	RA204	PALIKI	2-24		
	RA205	PFEIFFER	2-7		
	RA206	KAIHALULU	2-14		
	RA207	AMAMI	2-12		
	RA208	MYANMAR	2-16		
	RA210	ONEKOTAN	2-3		
	RA211	SUVA	2-24		
	RA212	PALAUU	2-11		
	RA213	SHELTER COVE	2-11		
	RA214	EL BOLLULLO	2-28		
DESERT BREEZE	RA300	HYAMS	18	---	150 cm (59")
	RA302	PAPAKOLEA	19		
	RA309	KALUTARA	17		
	RA310	ONEKOTAN	20		
	RA314	EL BOLLULLO	22		
LAPPING	RA400	HYAMS	26	---	106,5 cm (42")
	RA401	PATAN	2-27		
	RA404	PALIKI	25		
	RA409	KALUTARA	2-4		
	RA411	SUVA	23		
	RA413	SHELTER COVE	21		
RA414	EL BOLLULLO	28			



Do not reverse hang



140 cm / 55.1" (±3%)



~ 335 g/m2 (±5%)



Polyamide fibers on non woven

Joints in this product can be visible according to design, light, production and hanging. It is to be considered a characteristic of the material.